

Taff

Talks

March 2024



Sleepout for Llamau

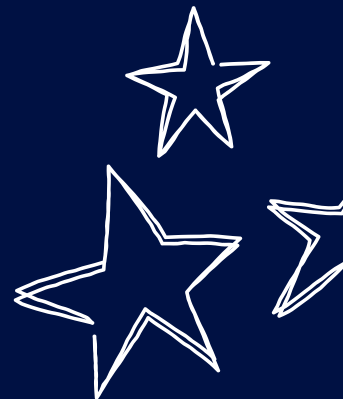


£2,380 raised for Llamau

We believe a safe space to sleep is a right, not a privilege which is why in November Taff colleagues took part in a sleep out in solidarity for Llamau - a homeless charity in Wales that supports vulnerable young people and women.

It costs £98 to house someone in one of Llamau's projects for the night and we were incredibly fortunate to raise a total of £2,380. We'd like to say a big thank you to everyone who donated.

“ The idea of the sleepout is to help raise money for charity but also raise awareness of the challenges being faced by many people across the city. ”



COST OF LIVING SUPPORT



MONEY ADVICE

Money and budgeting advice for Tenants

If you would like Support with budgeting or managing your tenancy, please speak to your Neighbourhood or Income Officer for a referral to our Community Inclusion Team.

MENTAL HEALTH SUPPORT

24 hours a day, 365 days a year

If you need someone to talk to, day or night, the Samaritans are there to listen. They won't judge or tell you what to do.

Freephone 116 123
www.samaritans.org/wales

SAMARITANS

WELLBEING & FOOD POVERTY

Winter Wellbeing Club with free food and companionship

We run a fortnightly Winter Wellbeing Club in the conference suite behind our Canton office. You can get free food, warmth and listen to interesting speakers. A great opportunity to socialise and get support.



For more information about money advice, vouchers or the Winter Wellbeing Club please contact the Community Inclusion team:
Freephone: 0800 121 6064
or email: contact@taffhousing.co.uk

TAFF COMMUNITY ALLOTMENT

Grow your own food

Are you interested in growing your own food? We have a community allotment in Leckwith with plots currently available.



If interested contact on the tenant engagement on: 0800 121 6064
or email together@taffhousing.co.uk



Little Wish 2023 ✨

Taff staff have organised the Little Wish project since 2020. The project gives an opportunity for tenants struggling with the cost of Christmas to get free gifts for children and young people living in a Taff property. It's been another busy year for the project.

We would like to say a special thank you to the generous donations and unwavering support from local businesses, contractors, the local community, and even colleagues for this year's gift appeal!

THANK YOU!

- EnCon Construction
- St Davids / Dewi Sant
- Christmas Appeal
- Moco landscaping and maintenance
- IDM Doors Ltd
- Gibsons
- Local Resident Julia
- Canton Traders
- Principality Building Society (Canton)



The project will run again during Eid and will be advertised again closer to the time.

These contributions really make a difference so that children and young people can enjoy the magic and festive spirit of Christmas.

The donations from this year's appeal has provided 34 families and a total of 68 children with a gift for Christmas.

Children's Christmas Party

What a spectacular celebration we had at the 223 Children's Christmas Party, organised by our Tenant Residents Association.

The event had a range of activities including a line-up of fun games such as pass the parcel and festive crafting. Alongside festive treats and snacks.



Santa also paid us a visit and each child was treated to a special present from Santa's workshop bringing smiles and excitement.



A big thank you to the Tenant Resident Association for organising an amazing event.



If you are interested in getting involved and joining our Tenant Resident Association see next page for more information.

Together at Taff 2024

We want tenant's to be at the heart of everything we do at Taff.

We have lots of opportunities for you to get involved, have your say and make a difference in the community.

- Meet new people
- Develop transferable skills
- Improve services
- Get involved in Community Activities



Our Groups :

- Have Your Say
- Strategic Tenant Influence Group
- Tenant Scrutiny Panel
- Tenant Resident Association
- Black Asian Minority Ethnic Group
- Allotment Group
- Disability Awareness Group



Interested in getting involved?



Email

together@taffhousing.co.uk



Phone

0800 121 6064 and ask to speak to our Tenant Engagement Team.



Festive Crafts at Ty Enfys

To celebrate the festive spirit, the residents at Ty Enfys took part in a lovely afternoon crafting session making memorable gifts.



Welcoming Rhian, a talented craft instructor who had come to guide them through an afternoon of creative delights.

The residents eagerly got to work carefully decorating Christmas jars with twinkling decorations and using painted hand and footprints on festive music sheets and poems.

Alongside enjoying some festive mince pies



Winter Wellbeing Club

2023 saw our Winter Wellbeing Club return for a second year with a range of sessions and speakers.

Our special festive event was supported by City Plumbing UK. Their generous donation was able to provide a delicious roast dinner for attendees to enjoy. We also heard from talents of Canton Rugby Football Club Male Choir who sang a range of Christmas Carols.



We were lucky to have been joined by the Welsh Government First Minister and our local MS Mark Drakeford who was also awarded an Honorary Membership by Taff Allotment Group.

As well as Shadow Minister for Social Partnership and our regional MS Joel James who stopped by to engage with tenants, colleagues and volunteers.



We'd like to say a special thank you to everyone who joined us and to our amazing volunteers Liz and Gareth for helping on the day!

THANK YOU!

About START

Our support scheme START (Support to achieve resettlement together) is based in Bridgend and the team aim to support people who have been released from custody in the last 12 months, who are homeless or threatened with homelessness.

Journey with START

One individual that has been supported, felt lost and overwhelmed after spending time in prison.

They were introduced to the START team by their probation officer and the support from the team led to them gaining temporary accommodation in a shared house with both male and female residents.

With a history of experiencing domestic violence, this situation was not ideal for them. However, it was a starting point for their journey, and through the guidance from the team, they were able to explore alternate housing options.

They highlighted the significant role the START team played in rebuilding their confidence post release. They said that the consistency of support by the team, provided them with the necessary tools to navigate the complexities of life beyond their release and empowered them to tackle any setbacks head-on.

When asked what advice they would give to someone in a similar situation, their advice was simple: embrace the support and take it one day at a time and ensure readiness for independent living.

With only a few months since release they are finding stability residing with grandparents and attending fortnightly appointments with team and other support agencies. Their vision for the future is positive, with a lot of gratitude towards the START team. They aspire to be reunited with their son, establish a home with their beloved dog, and eventually tie the knot with their partner.



SUPPORT

Keeping communal areas clear and safe

Items in communal areas (if you have them) are a fire risk and can act as a fuel for fire and can cause trip hazards in the event of fire and smoke. It's important we keep you safe with clear escape routes. Please help us by keeping your communal areas clear and disposing of unwanted items correctly

HOW TO DISPOSE OF UNWANTED ITEMS

Disposing of bulky items?

Check out the bulky item collection service provided by the council.



Looking to donate items?

Find out where your nearest charity shop is.



Find your nearest recycling centre.

Find out where and how to recycle a specific item, either from home or local centre.



Need an item repaired?

Find a local repair café who may be able to help.





Did you know? **Mould** is caused by **damp** and **damp** is caused by **condensation**.

- They're usually caused when moisture gets into your home from the outside, or through normal, everyday activities like bathing, cooking, and washing - even breathing!
- If the moisture has no way to get out, condensation, damp and mould can appear.
- If left untreated it can get worse and can have an impact on your health.



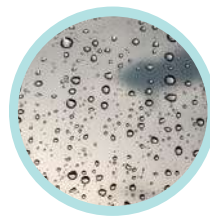
A white, powdery salt-like substance on outside walls.



Lifting or peeling wallpaper



Visible dark patches on walls



Water droplets on windows or walls

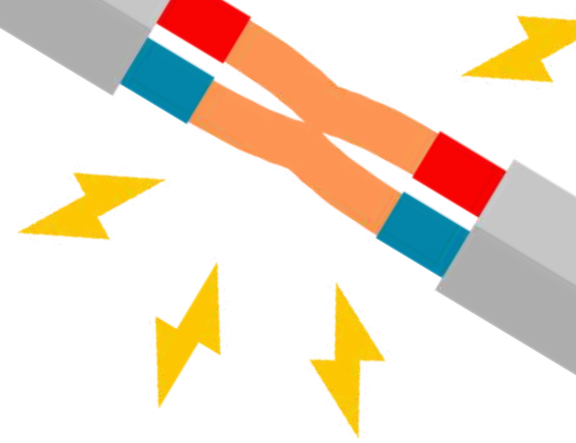
💧 If you think that you any damp, mould, or condensation issues in your home, please get in touch.

📌 For further advice and guidance, please visit taffhousing.co.uk/news/damp-mould/

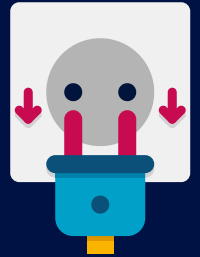
Electrical Safety

It is important to avoid electrical hazards in your home to ensure you and your family are kept safe.

You can do this by following these few simple steps:



- Always unplug electrical devices when not in use.
- Do not overload sockets - use one plug for each dedicated socket.
- Never use a damaged socket to plug in electrical items
- Lights and bulbs can get very hot, be careful where you place them and always use the correct bulb for the fitting



If you have any concerns with electricity safety in your home, please contact us.